



About Versatility

Versatility Tool Works is a leader in the manufacture of precision tooling and sheet metal products. Established in 1972 and located in the Chicago metropolitan area, Versatility produces both long and short run stampings; rolled formed products; fabricated sheet metal parts and assemblies; progressive stamping tools and fixtures; and precision machined components. Markets served include: architectural and institutional lighting; education; electronics; controls; computers; office products; building and construction; medical and health care; cabinets and tool boxes; machine tools; material handling; military and defense; and point-of-purchase displays.

Core Competencies

STAMPING

- High Speed and Traditional Stamping up to 200 Tons
- Computer Integrated Process and Quality Monitoring

SHEET METAL FABRICATION

- CNC Turret Punching and Laser Cutting
- Precision Metal Forming
- "Lights Out" Automated Manufacturing
- Robotic Welding

TOOLING AND PRECISION MACHINING

- Fabrication of Complex Progressive Tools and Fixtures
- Experienced with Carbide and Other Advanced Tool Steels
- Complete Tool Room Capabilities Including:
 - Electro-Discharge Machining
 - Multi-Axis CNC Machining
 - Automated Grinding

FINISHING AND ASSEMBLY

- Resistance Welding and Hardware Insertion
- Finishing: Powder Coating, Plating, and Deburring
- Mechanical and Electro-Mechanical Assembly

QSTEP™ PROCESS



PARTNERSHIP BENEFITS

Using our QStep™ Process, Versatility engages the customer throughout a project's entire life cycle. This adds value by positively impacting quality, cost, delivery, and ultimately the success of the project. Here's how we do it:

Step 1: Discovery

Not all organizations are the same. Asking the right questions is the key to understanding and meeting our customers' requirements. Versatility's sales and engineering professionals are trained to interpret each customer's unique needs and tailor a program that best fits those needs.

Step 2: Engineering Engagement

Our engineers collaborate closely with our customer's engineers. Often, small changes in design can have a significant manufacturing impact. Versatility's expertise in the design of sheet metal components for lowest cost manufacturability saves both money and time.

Step 3: Tooling Experts

Versatility contributes more than 40 years of tooling experience to solve our customer's most demanding challenges. Tools and fixtures are designed and built in-house, allowing Versatility complete control of cost and scheduling.

Step 4: Fabrication

Versatility invests in the latest manufacturing technologies like servo driven presses, laser cutting systems, robotics, and "lights-out" automation to lower cost, improve quality, and offer the best value option to our customers.

Step 5: Fulfillment Collaboration

Versatility's fulfillment programs keep our customers lean. Benefits include real cost savings for customers by reducing inventory, administrative costs, and floor space requirements.

What Sets Us Apart Is Our Commitment to Quality!

We imagine, we create, we partner, and search for strategic solutions that make a difference. Our VQS™ (Versatility Quality System) and the QStep™ Process together create a proactive approach that builds quality into the manufacturing process. Versatility's tooling uses embedded sensors to monitor critical process parameters allowing us to deliver defect free products to the customer.



VERSATILITY TOOL WORKS AND MANUFACTURING COMPANY, INC.

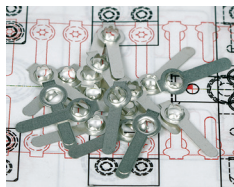
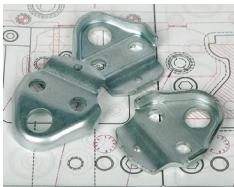
11532 South Mayfield Avenue • Alsip, Illinois 60803 • Phone: 708.389.8909 Fax: 708.389.8955

WWW.VERSATILITYTOOL.COM • EMAIL info@versatilitytool.com

Customers

Over the last 40 years, Versatility Tool Works has built partnerships with a diverse group of customers, many of them market leaders in their industries. Examples include:

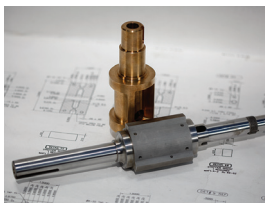
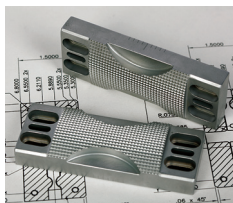
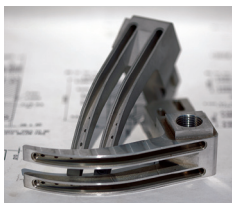
STAMPING



PRECISION SHEET METAL FABRICATION



TOOLING AND PRECISION MACHINING



TESTIMONIALS

“Versatility is a well established organization and a forward thinking company. They embrace collaboration and promote lean thinking with their customers. They offer a highly knowledgeable engineering staff and provide superior customer service. Our organization recognizes Versatility as a highly valued partner.”

Tricia M. Kerns
Focal Point LLC
Material Manager

“Versatility has delivered. Custom colors and cabinet configurations designed for Amada tooling provide a great value to my customers. The quality has been flawless. We turned a 10% rejection rate into zero by switching to Versatility® Cabinets. Delivery times have also improved, from weeks to days, with most orders shipping the next day.”

Scott Bowerman
Amada America
National Tooling Sales Manager

Above logos are registered trademarks of represented companies.

THE POWER OF PRECISION™

SINCE 1972